

BEAUTY THERAPY PRICES



BODY

	LEVEL	TIME	COST
--	-------	------	------

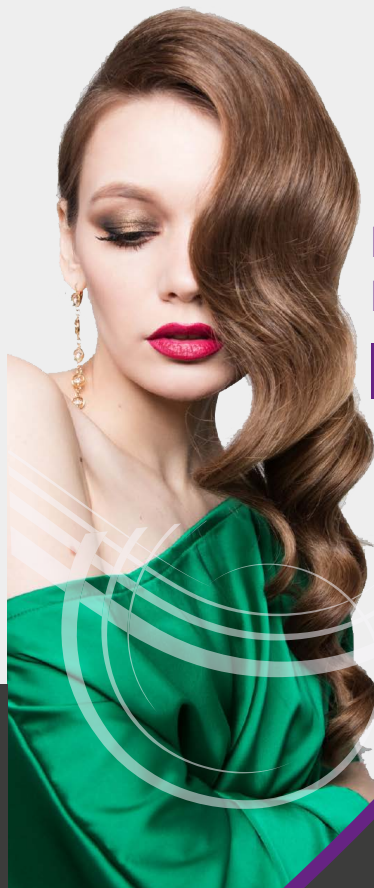
Mechanical G5/Gyratory massage, audio sound and infra-red treatments can be used alone or incorporated into a manual Swedish Massage at no extra cost to enhance treatment effects.

Swedish Massage - Full Body (Manual)	3	60 Mins	£14.00
Swedish Massage - Full Body, Head and Face	3	75 Mins	£15.00
Swedish Massage - Back and Shoulder	3	30 Mins	£8.50
Aromatherapy Massage - Full Body	3	60 Mins	£16.00
Aromatherapy Massage - Full Body, Head and Face	3	75 Mins	£17.00
Aromatherapy Massage - Back and Shoulder	3	30 Mins	£11.00
Stone Therapy Massage - Full Body	3	60 Mins	£16.00
Stone Therapy Massage - Full Body, Head and Face	3	75 Mins	£17.00
Stone Therapy Massage - Back and Shoulder	3	30 Mins	£11.00
Indian Head Massage	3	45 Mins	£11.50

WAXING AND TANNING

Eyebrow Wax	2	15 Mins	£4.00
Upper Lip or Chin Wax	2	10 Mins	£3.50
Underarm Wax	2	15 Mins	£6.00
Half Leg Wax (Knee to Ankle)	2	30 Mins	£8.50
Half Leg Wax (Above the Knee)	2	30 Mins	£8.50
Full Leg Wax	2	45 Mins	£13.00
Bikini Line Wax	2	15 Mins	£7.50

In order to allow us to run our salons efficiently, please give 24 hours notice of cancellations whenever possible. Please add 15-30 mins to each treatment to allow for consultation and aftercare advice to be given. All prices are subject to change.



Hairdressing and Beauty Therapy

Price List

TO BOOK AN APPOINTMENT CALL:

☎ 01775 715882

Style Academy, Red Lion Street, Spalding, Lincs, PE11 1SX

✉ spaldinginfo@boston.ac.uk www.boston.ac.uk

boston:college
SPALDING

HAIRDRESSING PRICES

Prices include a full consultation given by qualified stylists and a complimentary beverage.

STYLING	LEVEL 2	LEVEL 3
Shampoo and Blow Dry	£5.50	£8.00
Shampoo and Set	£5.50	£8.00
Shampoo, Cut and Finish	£7.50	£10.00
Restyle	-	£12.50
Gents Cut	£4.50	£5.00
Long Hair Put-up	From £10.00	From £10.00
Conditioning Treatment (Extra)	£3.00	£3.00

PERMING	LEVEL 2 AND LEVEL 3
Perm	From £15.00
Perm (Long Hair)	From £25.00

All costs inclusive of blow dry plus a follow up perm check which must be taken within 2 weeks of treatment. Add an extra £5 for a Level 2 cut or £7 for a Level 3 cut.

COLOURING	LEVEL 2 AND LEVEL 3
All costs inclusive of blow dry, Add an extra £5 for a Level 2 cut or £7 for a Level 3 cut.	
Permanent Colour (Roots)	From £14.50
Permanent Colour/Quasi (Full Head)	From £17.50
Cap Streaks	From £13.00
Woven Highlights T-Section	From £15.00
Full Highlights	From £25.00
Highlights plus full colour	From £35.00

Colour correction/creative colour to be quoted on request

When booking a colour, please be aware that a skin test needs to be performed 48 hours prior to treatment.

Level 2 and Level 3 refer to Level 2 and 3 Learners.

BEAUTY THERAPY PRICES

FACIALS (Skin Type)	LEVEL	TIME	COST
Dermalogica Luxury Facial	2	60 Mins	£12.50
Make-up Application	2	30-45 Mins	£6.00

A course of specialist facial treatments, plus the use of the correct skin care at home would be recommended to gain optimal skin improvement and benefits.

EYES	LEVEL	TIME	COST
Eyebrow Shape	2	15 Mins	£4.00
Eyelash Tint	2	20 Mins	£5.00
Eyebrow Tint	2	10 Mins	£3.00
Eyelash and Eyebrow Tint	2	30 Mins	£7.00
Individual False Lashes	2	20 Mins	£7.00

When booking one of these treatments, please be aware that a skin test needs to be performed 48 hours prior to treatment.

HANDS AND FEET	LEVEL	TIME	COST
Manicure	2	45 Mins	£7.50
Manicure with Gel Polish	2	45 Mins	£12.50
Pedicure	2	50 Mins	£8.50
Pedicure with Gel Polish	2	50 Mins	£13.50
Luxury Manicure	2	60 Mins	£10.00
Luxury Manicure with Gel Polish	2	60 Mins	£15.00
Luxury Pedicure	2	60 Mins	£11.00
Luxury Pedicure with Gel Polish	2	60 Mins	£16.00
Gel Polish	2	-	£10.00
Gel Polish Removal	2	-	£5.00

